

ADDENDUM  
INSTALLATION, OPERATIONS & PARTS  
R-290 REAR RAILGEAR UNIT W/  
ROD OPERATED RAILGEAR LOCK

SAFETY PRECAUTIONS

If any installation problems are encountered, please call G&B Specialties, Inc. for technical assistance before continuing with the installation process.



- Failure to heed to any of the following warnings could result in severe bodily injury and/or equipment damage.
- Read and understand this manual completely before attempting installation of the equipment.
- Installation instructions provided below only address the RAFNA railgear equipment. Applicable railway company procedures and policies must be adhered to.
- Before performing any work under the vehicle or railgear, ensure the engine is turned off and the parking brake is set.
- Beware of all pinch points on the railgear and keep all parts of the body clear.
- Always disconnect the vehicle's battery when welding on the vehicle or railgear in order to protect the vehicle's electrical system.

**INSTALLATION OF REAR RAILGEAR ROD LOCK KIT**

The following procedure details the installation of the front railgear kit as it pertains to the Front Railgear Rod Actuated Lock. The hardware required for one front installation is listed in table 1.

Table 1: Railgear Kit Installation Parts

Part Number	Description	Qty
R-2900LR	Front Railgear Assembly, Rod Lock	REF
R-1600	Rail Wheel Assembly	REF
R-21102D	Rail Sweep, Driver's Side	REF
R-21102P	Rail Sweep, Passenger's Side	REF
K-R29ARRXR290R	Lever Lock Kit	1

The components of the Rear Rod Lock Kit are listed in Table 2 below.

Table 2: K-R29ARRXR290R - Rear Rod Lock Kit

Part Number	Description	Qty
P-00031	Push Rod, Lower (Pre-Assembled)	1
P-00032	Push Rod, Upper	1
P-00023	Lock Pin (Pre-Assembled)	1
R-3561	Spring (Pre-Assembled)	1
P-00024	Tie Plate	1
R-5652A	Knob	1
P-00034	Support Plate, Upper Rod	1
R-990KIT-279	Installation Hardware Kit	1

1. Refer to the Railgear Kit installation manual that was shipped with this Railgear Unit for installation procedures.
2. The Rear Railgear Unit is shipped with the rod lock partially assembled. The remaining components are shipped loose with the railgear unit and will need to be installed at railgear installation.
3. Once the railgear is installed at the correct mounting height, assemble the lower push rod to the upper push rod with the supplied tie plate. Locate and adjust the upper push rod as necessary.
4. The upper push rod may cut to length or otherwise modified by the installer as required to work with the individual vehicle installation.
5. Locate and install the upper rod support plate as necessary. Due to the length of the upper rod it is necessary to support the end of the rod to ensure proper operation. If the supplied support plate is not suitable, a proper support plate will need to be supplied by the installer.

## OPERATION OF REAR RAILGEAR ROD LOCK KIT

The rear railgear rod lock is designed to automatically lock when the railgear unit is raised to the road position. It is important to ensure the rod lock is adjusted properly and in good working condition. It is also important that the rod is free from any vehicle obstruction that would hinder movement and/or operation.

### Rod Lock Operation

#### Placing The Vehicle On Rail - To Lower The Railgear:

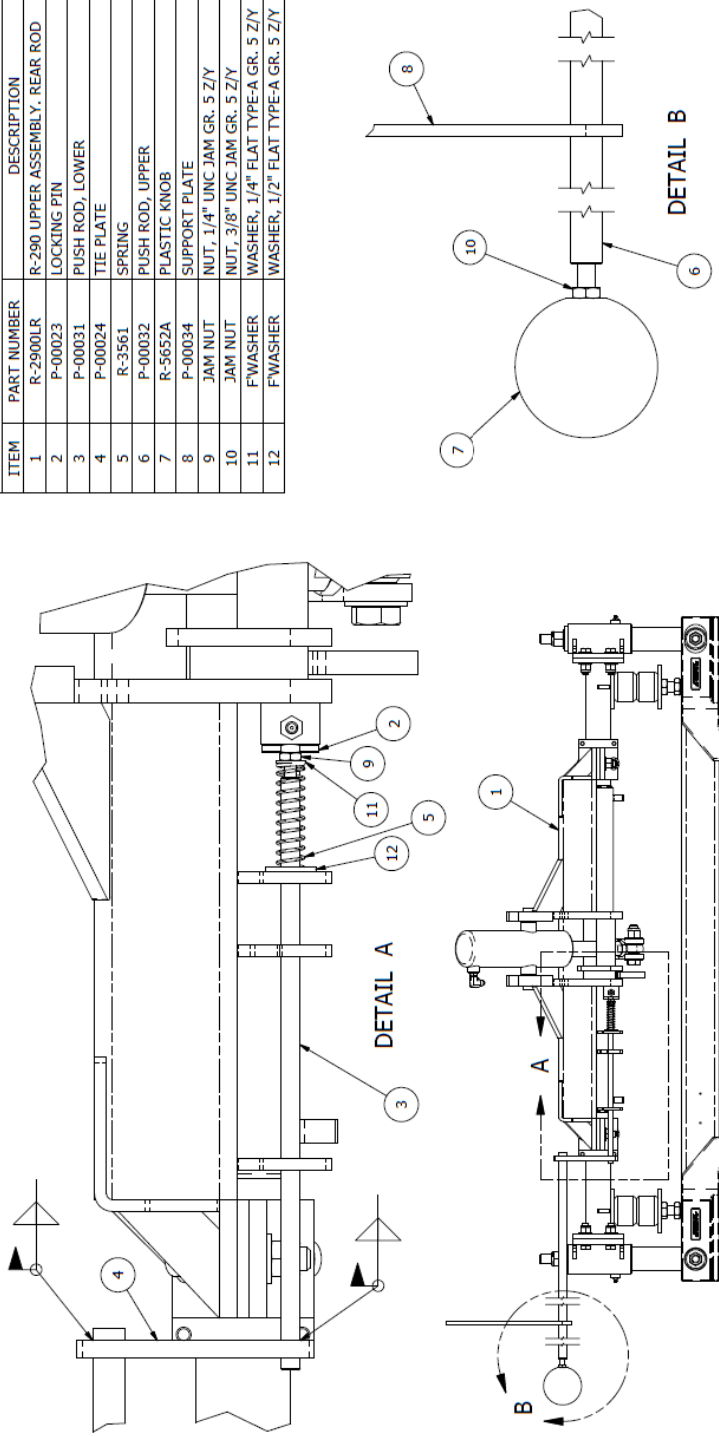
1. Disengage the lock pin by pulling on the upper push rod knob. Do not force. If the lock pin cannot be disengaged, raise the railgear slightly.
2. Hold the push rod in the disengaged position.
3. Lower the railgear and release the rod once the railgear has rotated past the road locked position.
4. As the railgear is being deployed, it will start taking some of the vehicle's load. The railgear's spring suspension should be observed compressing at least 1" under this load. (If this is not the case, **DO NOT use the railgear**. Inspect the railgear for lubrication and damage.)
5. Continue lowering the railgear until the hydraulic cylinder is fully extended and the lock pin re-engages in the rail position. Some railgear models have a lock cam converter installed to prevent the lock pin from engaging in the rail position; they have a hydraulic lock instead.
6. Ensure that the railgear is fully deployed and about 2° over-center before proceeding.

#### Removing The Vehicle From Rail - To Raise The Railgear:

1. Disengage the lock pin by pulling on upper push rod knob. Do not force. If the lock pin cannot be disengaged, lower the railgear slightly. (Some railgear models have a lock cam converter installed to prevent the lock pin from engaging in the rail position in which case the lock pin does not need to be disengaged.)
2. Raise the railgear and release the rod once the railgear has rotated past the rail locked position.
3. Continue raising the railgear until the lock pin clicks into the road locked position. The hydraulic cylinder should be completely retracted.

## PARTS OF REAR RAILGEAR ROD KIT

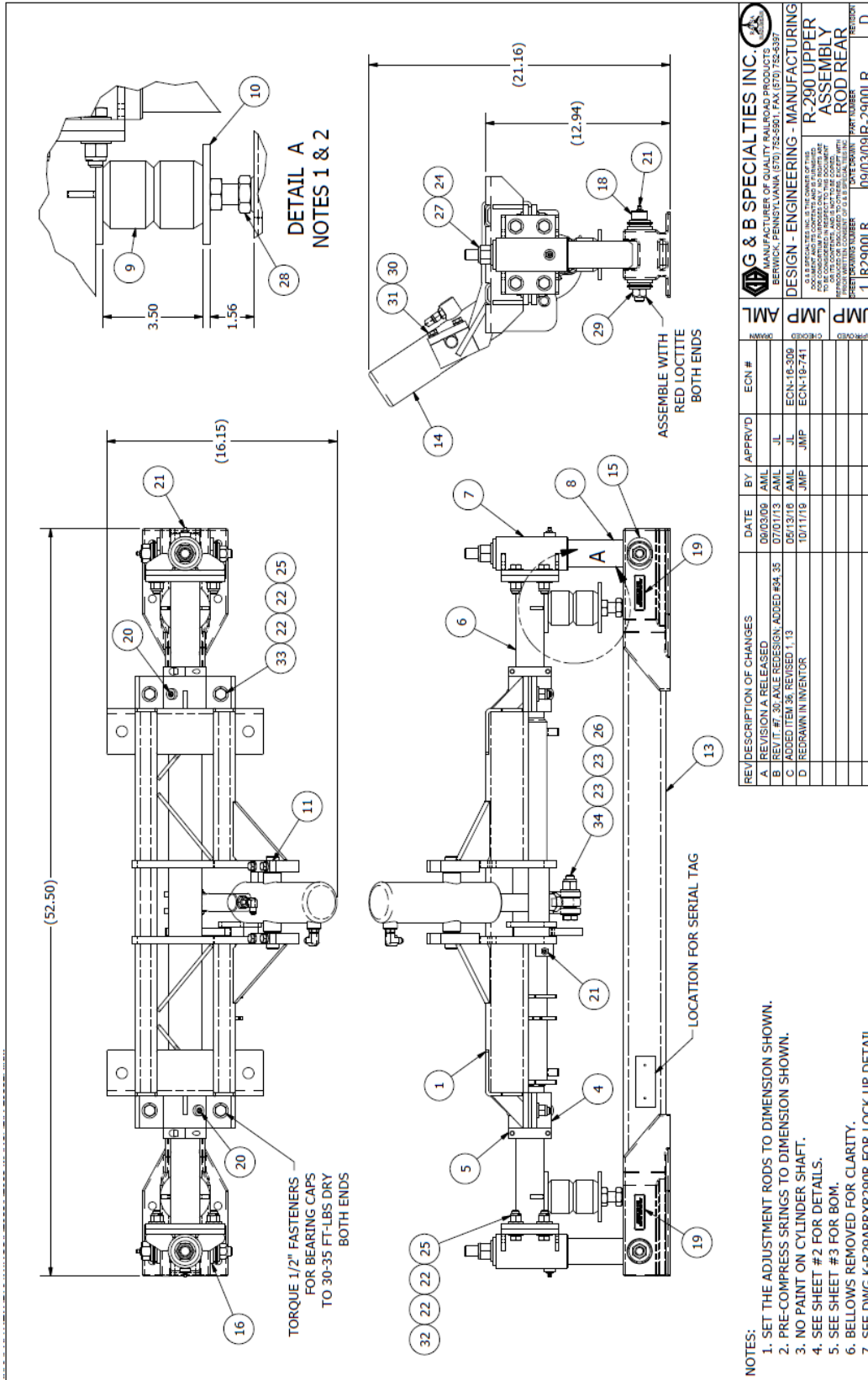
PARTS LIST			
ITEM	PART NUMBER	DESCRIPTION	QTY
1	R-2900LR	R-290 UPPER ASSEMBLY, REAR ROD	1
2	P-00023	LOCKING PIN	1
3	P-00031	PUSH ROD, LOWER	1
4	P-00024	TIE PLATE	1
5	R-3561	SPRING	1
6	P-00032	PUSH ROD, UPPER	1
7	R-5652A	PLASTIC KNOB	1
8	P-00034	SUPPORT PLATE	1
9	JAM NUT	NUT, 1/4" UNC JAM GR. 5 Z/Y	1
10	JAM NUT	NUT, 3/8" UNC JAM GR. 5 Z/Y	1
11	FWASHER	WASHER, 1/4" FLAT TYPE-A GR. 5 Z/Y	1
12	FWASHER	WASHER, 1/2" FLAT TYPE-A GR. 5 Z/Y	1

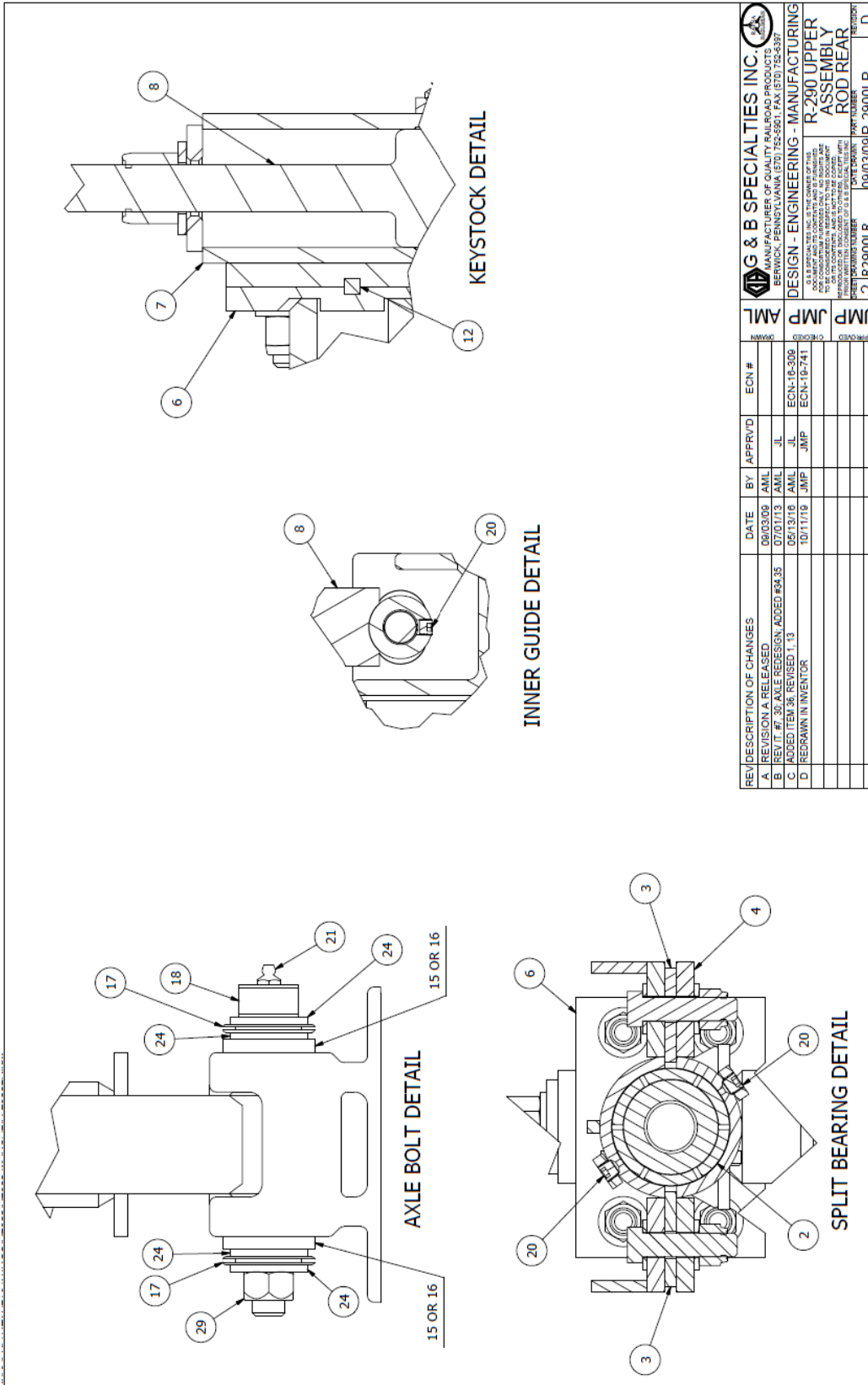


<b>G &amp; B SPECIALTIES INC.</b> DESIGN - ENGINEERING - MANUFACTURING			<b>R-290 ROD LOCK REAR</b>			
DATE	BY	APPRVD				
10/14/19	JMP					
<small>           IS A TRADE NAME IN THE UNITED STATES            REGISTERED AND IN COPYRIGHT AND IS SUBJECT TO            PATENT RIGHTS OF G &amp; B SPECIALTIES INC.            ALL RIGHTS RESERVED. ANY UNAUTHORIZED            REPRODUCTION OF THIS DOCUMENT IS STRICTLY            PROHIBITED. CONTACT G &amp; B SPECIALTIES INC.            FOR MORE INFORMATION.         </small>						
REV	DESCRIPTION OF CHANGES	DATE	BY	APPRVD	ECN #	APPROVED
A	REVISION A RELEASED					

**NOTES:**

- ITEMS 9-12 INCLUDED IN R-990KIT-279.
- ASSEMBLE ITEMS 2-5 TO UNIT WITH APPROPRIATE HARDWARE PRIOR TO SHIPMENT.
- REMAINING ITEMS TO SHIP LOOSE WITH UNIT.





REVISION/DESCRIPTION OF CHANGES	DATE	BY	APPR'D	ECN #	APP'D
A. REVISION 1 RELEASED	06/03/09	AML			
B. RESULT OF AXLE REVISION; ADDED #4.35	07/01/13	AML	IL		
C. ADD'D ITEM 3& REVISED 1, 13	05/13/18	AML	JMP	ECN-18-309 ECN-18-741	
D. REBORN IN INVENTOR	10/11/19	JMP			

DESIGN - ENGINEERING - MANUFACTURING	JMP	APPROVED
ASSEMBLY	JMP	APPROVED
ROD REAR	JMP	APPROVED
DATE DRAWN	09/03/09	
PART NUMBER	R2900LR	
REV	2	
REV	D	

**G & B SPECIALTIES INC.**  
 SUPPLIER OF QUALITY AIRCRAFT PRODUCTS  
 535 WEST 3RD STREET, BERWICK, PA 17011  
 TEL: (570) 752-5901 FAX: (570) 752-6397  
 WWW.RAFNA.COM

DESIGN - ENGINEERING - MANUFACTURING  
 ASSEMBLY  
 R-290 UPPER  
 ROD REAR

DATE DRAWN: 09/03/09  
 PART NUMBER: R2900LR  
 REV: 2  
 REV: D

PARTS LIST				PARTS LIST			
ITEM	PART NUMBER	DESCRIPTION	QTY	ITEM	PART NUMBER	DESCRIPTION	QTY
1	R-2910C	FRAME, UPPER CROSS	1	18	R-29042	PIN	2
2	R-3618	SPLIT BEARING SET, NYLON	2	19	Z-LABEL025	LABEL, AXLE WARNING	2
3	R-3602A	SHIM	4	20	R-125	PLUG, 1/8 NPT PIPE	6
4	R-3602B	BEARING END CAP	2	21	990900-009	FITTING, 1/8 NPT STRAIGHT	5
5	R-2589	SPLIT COLLAR	2	22	990600-050-002	WASHER, 1/2" FLAT TYPE-A NARROW	24
6	R-2920	FRAME, LOWER CROSS	1	23	990600-062-002	WASHER, 5/8" FLAT TYPE-A NARROW	2
7	R-2941	OUTER GUIDE TUBE ASSEMBLY	2	24	990600-075-002	WASHER, 3/4" FLAT TYPE-A NARROW	10
8	R-2944	INNER GUIDE TUBE ASSEMBLY	2	25	990316-050-22	NUT, 1/2" NYLOCK GR.8 Z/Y	12
9	R-130	SPRING, TIMBREN	2	26	990316-062-22	NUT, 5/8" NYLOCK GR.8 Z/Y	1
10	R-2948	ADJUSTMENT ROD	2	27	990316-075-22	NUT, 3/4" NYLOCK GR.8 Z/Y	2
11	R-2950	TRUNNION CAP	2	28	990330-075-02	NUT, 3/4" Hvy HEX JAM Z/Y	2
12	S8025-025	KEYSTOCK, 1/4" SQUARE X 4"	2	29	038066-062-22	NUT, 5/8" TOPLOCK GR.9 Z/Y	2
13	R-2930-1	AXLE	1	30	990402-037-02	WASHER, 3/8" Hvy LOCK Z/Y	4
14	R-9115	HYDRAULIC CYLINDER ASSEMBLY	1	31	990725-125-22	SCREW, 3/8" X 1-1/4" HHCS GR.8 Z/Y	4
15	R-29041	SLOTTED BUSHING	2	32	990725-175-22	SCREW, 1/2" X 1-3/4" HHCS GR.8 Z/Y	8
16	R-29041A	BUSHING	2	33	990727-200-22	SCREW, 1/2" X 2" HHCS GR.8 Z/Y	4
17	R-1505	BELLOWS	2	34	990729-275-22	SCREW, 5/8" X 2-3/4" HHCS GR.8 Z/Y	1

REVISION A	RELEASED	DATE	BY	APPRVD	ECN #	APPROVED
B	REVISION A RELEASED	08/03/09	AML			
C	REVISION A RELEASED	04/13/12	AML	JL	ECN-18-309	
D	REVISION A RELEASED	10/11/18	JMP	JMP	ECN-19-741	
<p>DESCRIPTION OF CHANGES</p> <p>A REVISION A RELEASED</p> <p>B REVISION A RELEASED</p> <p>C REVISION A RELEASED</p> <p>D REVISION A RELEASED</p>						
<p>MANUFACTURER OF QUALITY RAILROAD PRODUCTS</p> <p>DESIGN - ENGINEERING - MANUFACTURING</p> <p>R-2900 UPPER ASSEMBLY ROD REAR</p> <p>DATE 09/03/09/R-2900LR</p>						