

INSTALLATION OF FRONT MOUNTING KIT 2020 and Up GM 2500/3500HD 4x2/4x4

INSTALLATION SAFETY PRECAUTIONS

If any installation problems are encountered, please call G&B Specialties for technical assistance before continuing with the installation process.



- Failure to heed to any of the following warnings could result in severe bodily injury and/or equipment damage.
- Read and understand this manual completely before attempting installation or operation of the equipment.
- Installation/Operation instructions provided below only address the Rafna Industries railgear equipment. Applicable railway company procedures and policies must be adhered to.
- Before performing any work under the vehicle or railgear, ensure the engine is turned off and the parking brake is set.
- Ensure all removed components are given to the vehicle owner after the installation of the railgear. These components must be re-installed if the railgear is removed from the vehicle.
- Always disconnect the vehicle's battery when welding on the vehicle or railgear to protect the vehicle's electrical system.
- Railway Company rules governing rail travel must be observed at all times.
- Never operate the vehicle if the Gross Vehicle Weight Rating (GVWR), Gross Axle Weight Rating Front or Rear (GAWR), or the wheel or tire load ratings are exceeded.

INSTALLATION OF FRONT MOUNTING KIT

The following procedure details the installation of the front mounting kit. The hardware required for this installation is listed in Table 1.

Table 1: Front Mounting Kit K-M29RXGF020 Installation Parts		
Part Number	Description	Qty
R-21234D	Front Mounting Bracket, Drivers Side	1
R-21234P	Front Mounting Bracket, Passengers Side	1
R-21238	Fronting Mounting Frame Extension	2
R-2960	Railgear Mounting Shim - 1/2" Thick	4
R-051	Side Wand Set w/ Fasteners	1
R-990KIT-438	1/2" UNC Gr. 8 Bolt x 1 1/2" Long	4
	1/2" UNC Gr. 8 Bolt x 2" Long	4
	5/8" UNC Gr. 8 Bolt x 2 1/4" Long	2
	5/8" UNC Gr. 8 Bolt x 5 1/2" Long	2
	1/2" Gr. 8 Flat Washer	16
	1/2" UNC Gr. 8 Nylon Insert Lock Nut	8
	5/8" Gr. 8 Flat Washer	8
	5/8" UNC Gr. 8 Nylon Insert Lock Nut	4
R-990KIT-439	3/4" UNC Gr. 8 Bolt x 2 1/4" Long	4
	3/4" UNC Gr. 8 Bolt x 2 3/4" Long	4
	3/4" UNC Gr. 8 Bolt x 3 1/4" Long	4
	3/4" Gr. 8 Flat Washer	8
	3/4" UNC Gr. 8 Nylon Insert Lock Nut	4

1. Remove the front bumper, bumper mounting brackets, and tow hooks. Retain the bumper and bumper mounting brackets for re-installation. The tow hooks will not be re-installed.
2. Remove the lower air cowling from under the radiator. The air cowling will not be re-installed.
3. Remove the skid plate from the front frame cross member. The skid plate will not be re-installed.
4. Insert the front frame extension (R-21238) into the frame and align with existing holes where the tow hooks were fastened. Insert the 1/2" x 1 1/2" bolts and supplied hardware in the outside of the frame and frame extension to hold in place.
5. Bolt each front mounting bracket to the frame extension as shown using the remaining 1/2" x 2" bolts and hardware, along with the 5/8" x 5 1/2" bolt and hardware. Ensure the mounting plate lower surfaces are 0° to the horizontal with the vehicle in the typical road position and aligned with each other. Tighten but do not torque the fasteners.
6. Using the existing hole in the mounting bracket, mark and drill the inside frame to allow for the installation of the 5/8" x 2 1/4" bolt and associated hardware. With bolt installed, all bolts can now be torqued to spec. Ensure nothing has moved in the process and mounting plate surfaces are still aligned and 0° to the horizontal.

7. The supplied railgear mounting shims are to be used as required when mounting the railgear to the front mounting plates.
8. Following the installation of the front railgear, the front bumper will fit in its original position. The front bumper will need to be trimmed/modified as required.
9. Separate the lower plastic air dam section of the bumper from the steel section of the bumper. The lower plastic section will not be re-installed.
10. Modify the OEM bumper as required to create clearance for all railgear components to eliminate any interference during its full range of motion.
11. Once the front bumper has been modified and adjusted as required, install the bumper and ensure railgear encounters no interference through its full range of motion. If rubbing/hitting occurs, further modifications are needed to the bumper to ensure free range of motion.
12. Reinforce bumper as needed to ensure proper support.

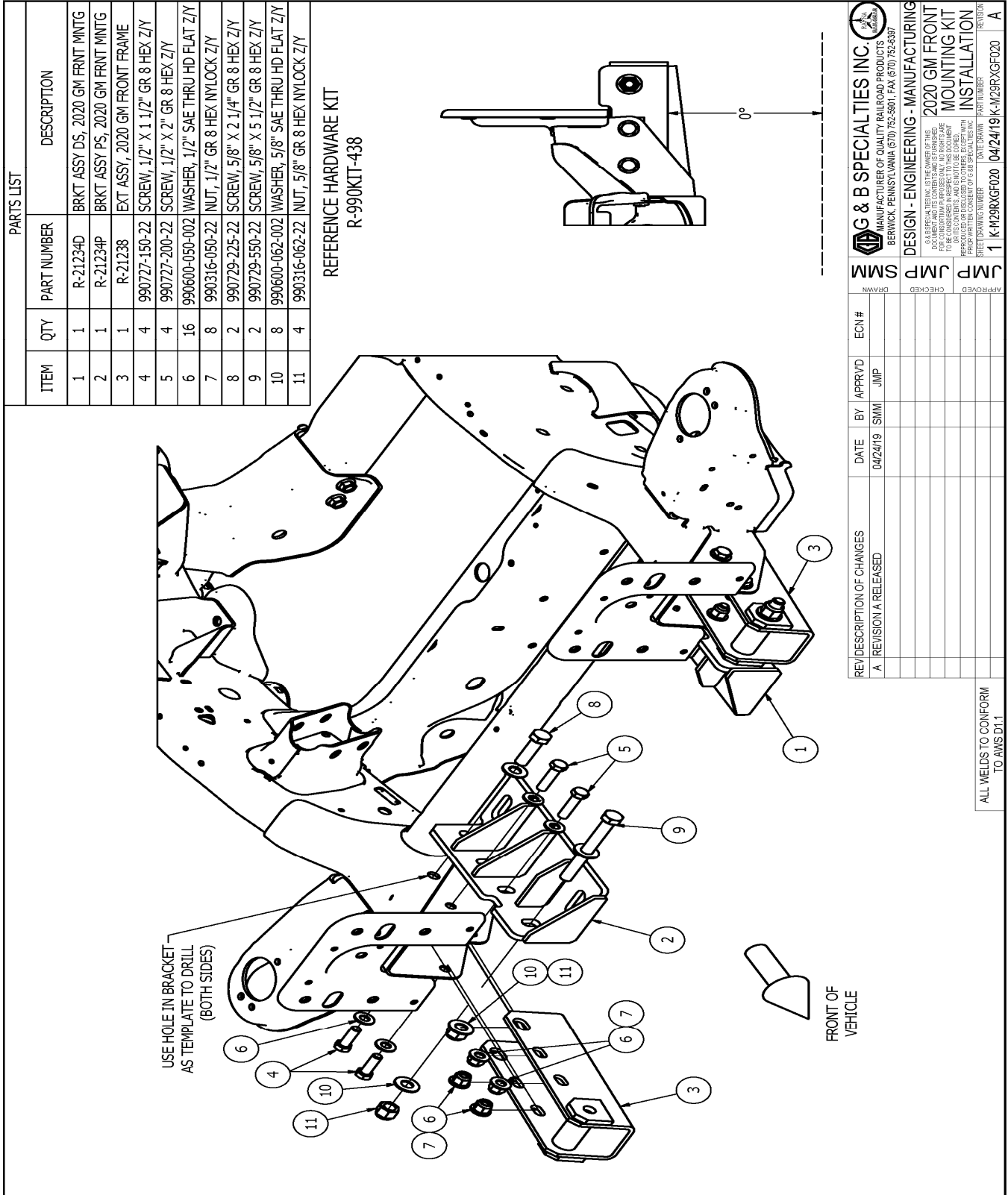


Figure 1 Front Mounting Installation

OPERATION, SERVICE AND PARTS OF FRONT MOUNTING KIT 2020 AND UP GM 2500/3500HD 4X2/4X4

OPERATION SAFETY PRECAUTIONS

If any operating, services or parts problems are encountered, please call G&B Specialties, Inc. for technical assistance.



- Failure to heed to any of the following warnings could result in severe bodily injury and/or equipment damage.
- Read and understand this manual completely before attempting operation of the railgear equipped vehicle.
- Operating instructions provided below only address the RAFNA Industries railgear equipment. Applicable railway company procedures and policies must be adhered to.
- Railway company rules governing rail travel must be observed at all times.
- Before performing any work under the vehicle or railgear, ensure the engine is turned off and the parking brake is set.
- Never operate the vehicle if the Gross Vehicle Weight Rating (GVWR), Gross Axle Weight Rating Front or Rear (GAWR), or the wheel or tire load ratings are exceeded.

OPERATION AND SERVICE OF FRONT MOUNTING KIT

With the front mounting kit installed on this vehicle, it may be operated as normal, however the front bumper is located further forward than standard. Sight wands are located on the front bumper to aid in determining the length and width of the vehicle. Caution must be used when operating the vehicle.

Never operate the vehicle if the Gross Vehicle Weight Rating (GVWR), Gross Axle Weight Rating Front or Rear (GAWR), or the wheel or tire load ratings are exceeded.

The front mounting kit must be serviced regularly to avoid damage to the equipment. Table 2 below provides the Recommended Service Schedule, and Table 3 provides Standard Fastener Torque Values.

Table 2: Recommended Service Schedule

Service Required	Initial 100 km (62 Miles) of road and/or rail use	Daily	Weekly	Monthly
Inspect front/rear mounting kit fasteners (re-torque if required)		✓	✓	✓

Table 3: Standard Fastener Torque Values

Fastener Size	Fastener Torque Value (ft.-lbs) Dry
1" UNC Gr. 8 Fasteners	250
3/4" UNC Gr. 8 Fasteners	175
5/8" UNC Gr. 8 Fasteners	150
1/2" UNC Gr. 8 Fasteners	100
3/8" UNC Gr. 8 Fasteners	40
1/4" UNC Gr. 8 Fasteners	12