

**INSTALLATION
OF TIRE PRESSURE MONITORING SENSOR
2017 CHEVY 2500/3500 CK PICKUP**

SAFETY PRECAUTIONS

If any installation problems are encountered, please call G&B Specialties for technical assistance before continuing with the installation process.



- Failure to heed to any of the following warnings could result in severe bodily injury and/or equipment damage.
- Read and understand this manual completely before attempting installation of the equipment.
- Installation instructions provided below only address the Rafna Industries railgear equipment. Applicable railway company procedures and policies must be adhered to.
- The road wheels and tires must be installed before the railgear is installed in order to obtain correct height measurements.
- Do not hit the wheel adapter with any hard objects as this could dent the adapter and cause vibrations when driving. If the adapters do not easily slide onto the hubs, lightly sand the hub and the inside of the adapter.
- Before performing any work under the vehicle or railgear, ensure the engine is turned off and the parking brake is set.

INSTALLATION OF TIRE PRESSURE MONITORING SENSOR

The following procedure details the installation of the tire pressure sensor on the 19.5” steel wheels provided with the RAFNA Industries Railgear equipment. The hardware required for this installation for one sensor and one wheel is listed in table 1.

Table 1: Tire Pressure Monitoring Sensor Installation kit

Part Number	Description	Qty
S-201502	19.5” x 6.75” Wheel 5.60” Offset	Ref
R-10055B	Tire Pressure Monitoring Sensor	1
R-21080	Valve Stem Adapter	1
R-10056	Nut	1
R-10057	Adapter Grommet	1
R-10058	Washer	1
R-10059	Washer	1

Tire Pressure Monitoring Sensor (TPMS)

The OEM TPMS Sensors will be reused but not the OEM valve stems as they are a Snap-in style that will not mount to the steel wheels supplied with RAFNA Wheel Modification Kit. A screw-on type valve stem that is secured to the steel wheel with a nut on the outside of the wheel is required and is supplied with this kit and is to be used with the OEM TPMS Sensor.

Installation of Tire Pressure Monitoring Sensor (TPMS)

1. Remove the OEM sensor assembly from the OEM wheel
2. Remove the OEM valve stem from the OEM TPMS sensor, by removing the screw securing the valve stem to the sensor, as shown. The valve stem and screw will not be reused. (Figure 1)
3. Remove the nut and rubber grommet from the valve stem adapter supplied with this kit, as shown. The nut and rubber grommet will not be reused. (Figure 2)
4. Assemble the valve stem adapter to the OEM sensor as shown, using the screw supplied with the valve stem adapter. It is recommended that the screw be torqued to 12 in-lbs. (Figure 3 & 4)
5. Assemble the backer washer and adapter grommet to the valve stem adapter as shown. (Figure 3)

6. Attach the TPMS sensor to the 19.5" steel wheel, as shown, using the supplied washer and hex nut. **The valve stem hex nut should be torqued to 25-30 in. lbs.** This is to maintain the proper operation of the sensor and to maintain an air tight seal with the wheel. (Figure 5 & 6)

Spare Tire

The OEM spare tire does not contain a tire pressure sensor. An extra OEM sensor will be shipped with this kit if ordered. The same installation process should be followed as in the previous section.

Tire Inflation

Tires should be inflated to a minimum pressure of 75psi to a maximum of 85psi. This will allow the replacement TPMS to operate within its designed pressure range of +/- 15% of inflated pressure before alerting the driver with a pressure warning light.

These are only recommended inflation pressures. The proper tire pressure should be determined by the operator of the vehicle, depending on vehicle load and operating conditions.

Programming the TPMS

It will be necessary to reprogram the vehicle's computer to read the new sensor and the required higher operating tire pressure.

Contact your local GM dealer for the correct procedure on reprogramming the TPMS.

Refer to page 6 for important GM Technical Service Bulletin.

Tire Rotation

When performing a tire rotation as part of the vehicle standard maintenance schedule, it will be necessary to re-set the TPMS so that the vehicle's computer knows the location of the moved sensors.

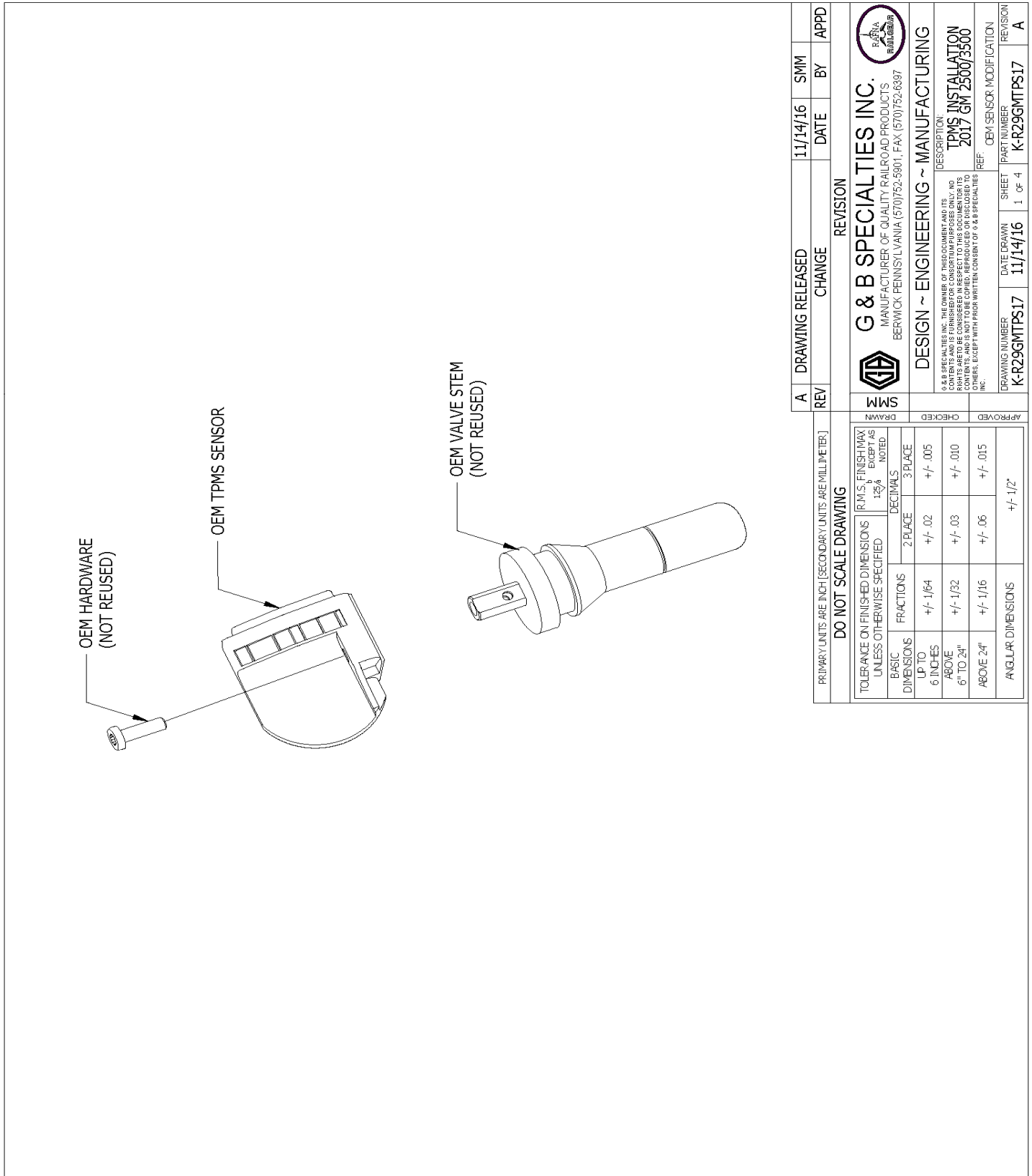

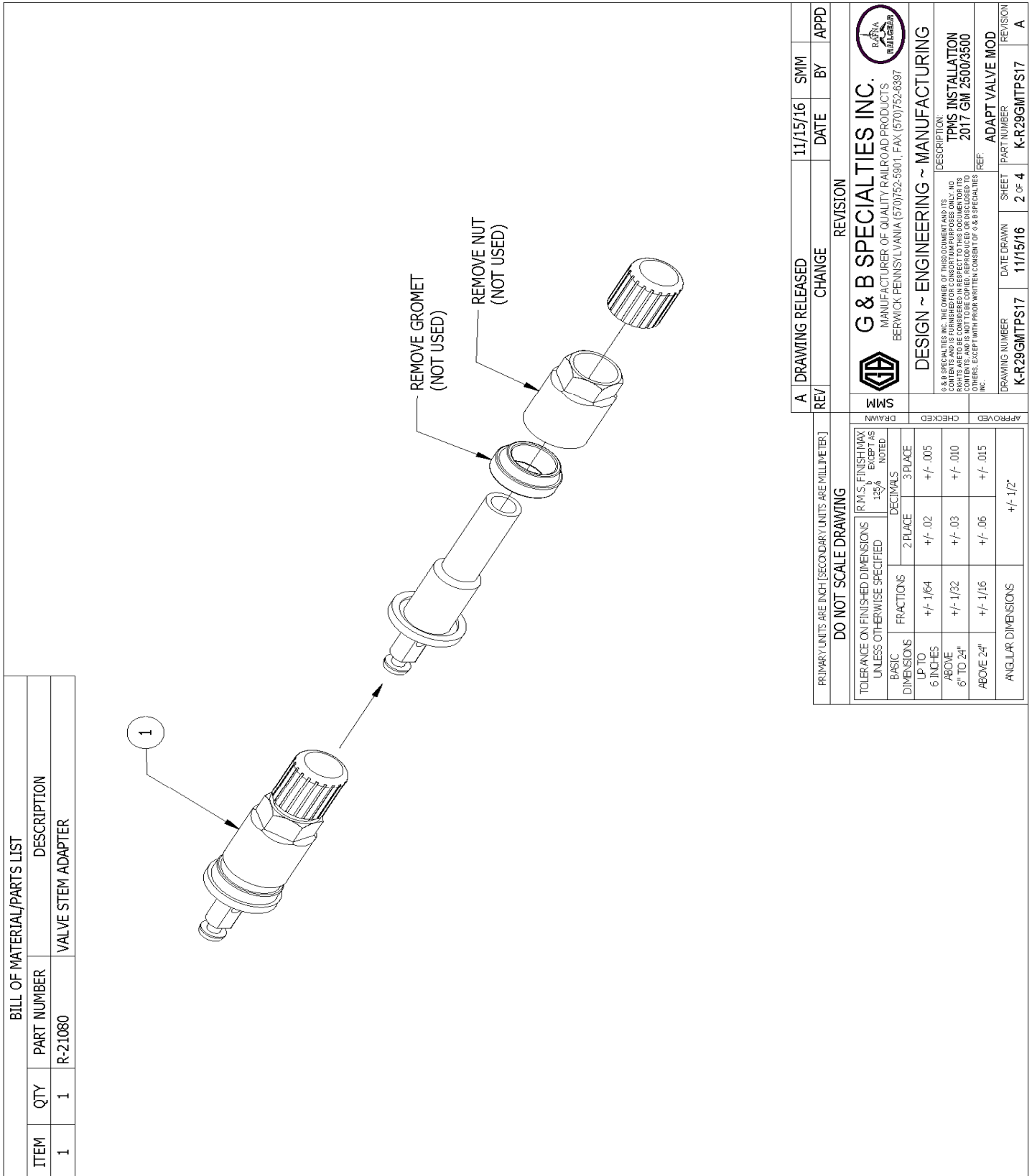


Figure 1

G&B Specialties Inc. 535 West 3rd Street, Berwick, PA, USA Tel: (570) 752-5901 Fax: (570) 752-6397

A	DRAWING RELEASED	11/14/16	SMM
REV	CHANGE	DATE	BY
REVISION			
 G & B SPECIALTIES INC. MANUFACTURER OF QUALITY RAILROAD PRODUCTS BERWICK PENNSYLVANIA (570)752-5901, FAX (570)752-6397			
DESIGN ~ ENGINEERING ~ MANUFACTURING			
<small> G & B SPECIALTIES IS THE OWNER OF THE DOCUMENT AND ALL RIGHTS ARE RESERVED. NO PARTS ARE TO BE COPIED, REPRODUCED OR DISCLOSED TO ANYONE, EXCEPT WITH THE WRITTEN CONSENT OF G & B SPECIALTIES INC. </small>			
<small> G & B SPECIALTIES IS THE OWNER OF THE DOCUMENT AND ALL RIGHTS ARE RESERVED. NO PARTS ARE TO BE COPIED, REPRODUCED OR DISCLOSED TO ANYONE, EXCEPT WITH THE WRITTEN CONSENT OF G & B SPECIALTIES INC. </small>		<small> DESCRIPTION: TPMS INSTALLATION 2017 GM 2500/3500 </small>	
<small> DRAWING NUMBER K-R29GMTPS17 </small>		<small> DATE DRAWN 11/14/16 </small>	
<small> SHEET 1 OF 4 </small>		<small> PART NUMBER K-R29GMTPS17 </small>	
<small> APPROVED </small>		<small> REVISION A </small>	
<small> DRAWN SMM </small>			
<small> CHECKED </small>			
<small> PRIMARY UNITS ARE INCH [SECONDARY UNITS ARE MILLIMETER] </small>			
DO NOT SCALE DRAWING			
<small> TOLERANCE ON FINISHED DIMENSIONS UNLESS OTHERWISE SPECIFIED </small>		<small> FINISH (FINISH MAY BE EXCEPT AS NOTED) </small>	
<small> BASIC DIMENSIONS </small>		<small> DECIMALS </small>	
<small> UP TO 6 INCHES </small>		<small> 2 PLACE </small>	
<small> ABOVE 6" TO 24" </small>		<small> 3 PLACE </small>	
<small> ABOVE 24" </small>		<small> 4 PLACE </small>	
<small> ANGULAR DIMENSIONS </small>		<small> +/- .005 </small>	
<small> +/- 1/64 </small>		<small> +/- .02 </small>	
<small> +/- 1/32 </small>		<small> +/- .03 </small>	
<small> +/- 1/16 </small>		<small> +/- .06 </small>	
<small> +/- 1/2° </small>		<small> +/- .015 </small>	


Figure 2

 G&B Specialties Inc. 535 West 3rd Street, Berwick, PA, USA Tel: (570) 752-5901 Fax: (570) 752-6397

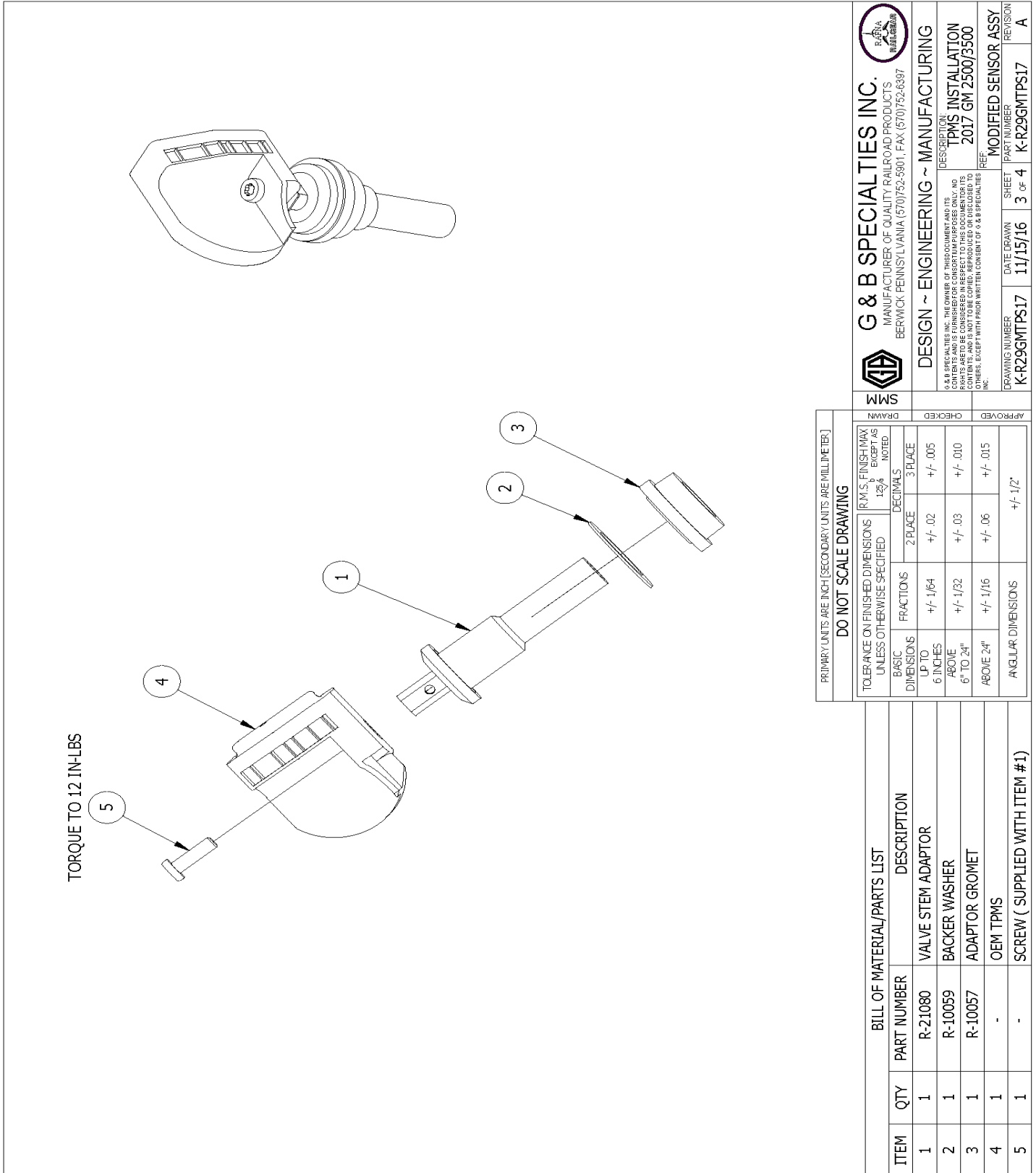
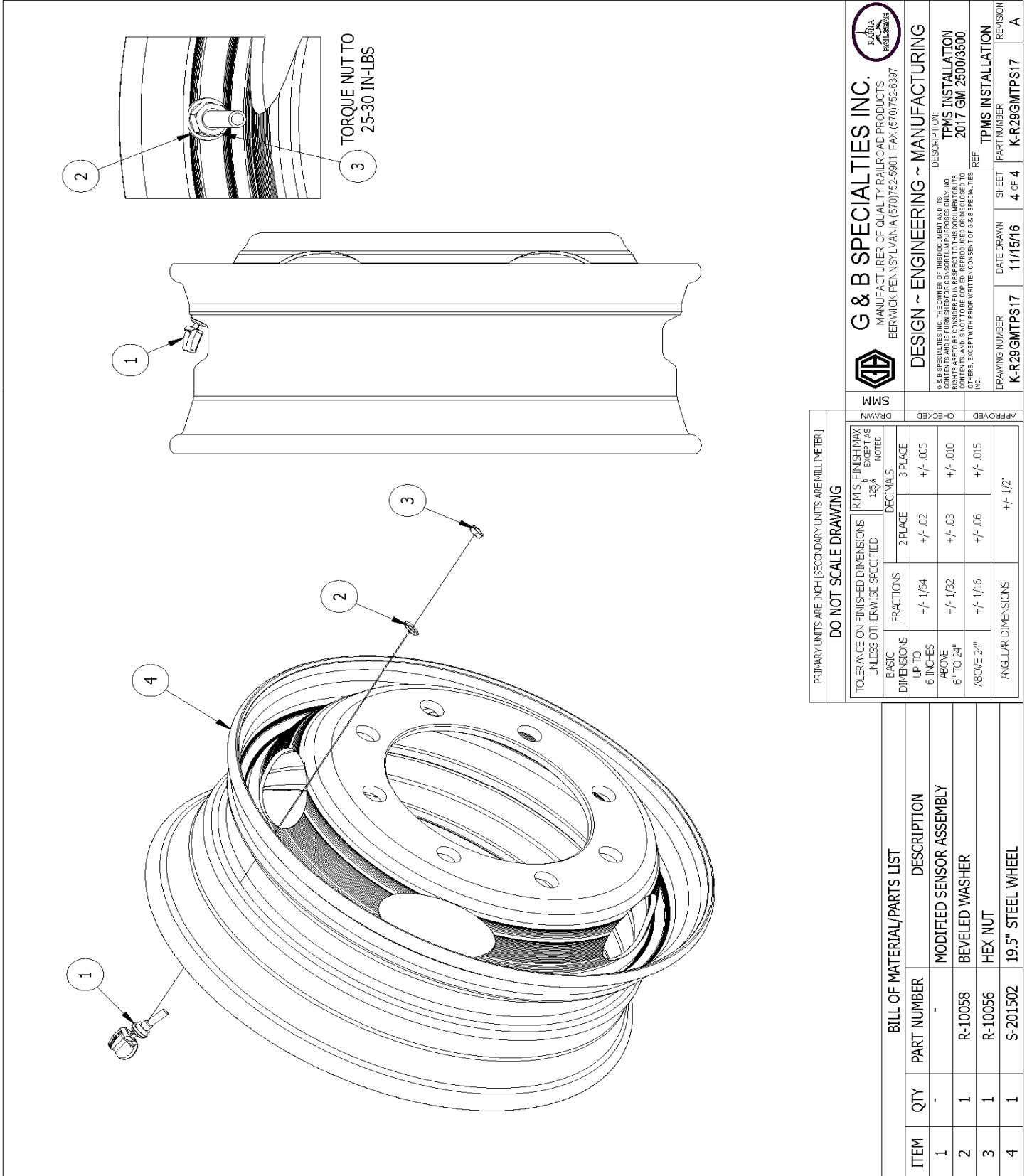

Figure 3



Figure 4
TORQUE TO 12 IN-LBS



Figure 5




Figure 6

 G&B Specialties Inc. 535 West 3rd Street, Berwick, PA, USA Tel: (570) 752-5901 Fax: (570) 752-6397

TOLERANCE ON FINISHED DIMENSIONS UNLESS OTHERWISE SPECIFIED		R.M.S. FINISH MAX EXCEPT AS NOTED	
BASIC DIMENSIONS	FRACTIONS	DECIMALS	3 PLACE
LP TO 6 INCHES ABOVE 6" TO 24"	+/- 1/64	+/- .02	+/- .005
ABOVE 24"	+/- 1/32	+/- .03	+/- .010
ANGULAR DIMENSIONS	+/- 1/16	+/- .06	+/- .015
			+/- 1/2"

DO NOT SCALE DRAWING			
PRIMARY UNITS ARE INCH (SECONDARY UNITS ARE MILLIMETER)			
DRAWN		CHECKED	
S.M.		APPROVED	

BILL OF MATERIAL/PARTS LIST		DESCRIPTION	
ITEM	QTY	PART NUMBER	DESCRIPTION
1	-	-	MODIFIED SENSOR ASSEMBLY
2	1	R-10058	BEVELED WASHER
3	1	R-10056	HEX NUT
4	1	S-201502	19.5" STEEL WHEEL

G & B SPECIALTIES INC.		DESCRIPTION	
MANUFACTURER OF QUALITY RAILROAD PRODUCTS		TPMS INSTALLATION	
BERWICK PENNSYLVANIA (570)752-5901, FAX (570)752-6397		2017 GM 2500/3500	
DESIGN ~ ENGINEERING ~ MANUFACTURING		TPMS INSTALLATION	
G & B SPECIALTIES INC. THE OWNER OF THIS DOCUMENT AND ITS CONTENTS IS NOT TO BE COPIED, REPRODUCED OR DISCLOSED TO OTHERS, EXCEPT WITH PRIOR WRITTEN CONSENT OF G & B SPECIALTIES INC.		DRAWING NUMBER	PART NUMBER
		K-R29GMTPS17	4 OF 4
		DATE DRAWN	REVISION
DESIGN ~ ENGINEERING ~ MANUFACTURING		11/15/16	K-R29GMTPS17
		SHEET	A

Vehicle Capacity Weight & Tire Info Label

Part Number	Vehicle(s)	Language(s)	Size (mm)
15261447	All GM < 10,000 lbs	English/French/ Spanish/Arabic/ Chinese	105 x 43

- Requirements – FMVSS/CMVSS 110

GS 48/SSA 1438

NOM-12-SCT2

TREAD Act

- Languages – English – USA English-European
PSI = BAR

English/French – Canada

Spanish – Mexico Arabic –

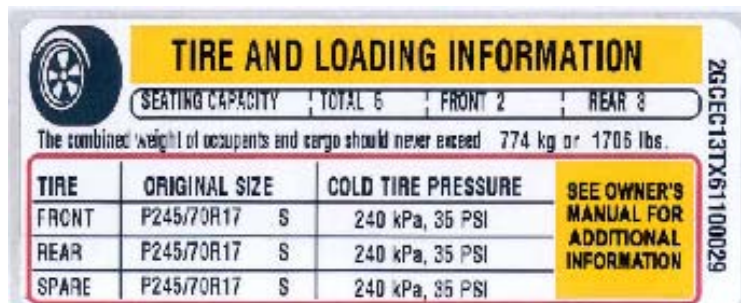
Gulf States Chinese – China

- Colors – Black/White/Red/Yellow
- Location – Driver-side B-Pillar or Inner Door
Edge if there is no B-Pillar

BEST PRACTICE LINK

[Tire Pressure Label 109604](#)

Example Label



- Label Type – Information