

RAFNA R-1130 Cushion-Ride Railgear

Description:

G&B Specialties' Model R-1130 railgear is designed for vehicles with GVWR's of 33,000 lbs or larger, using high carbon steel and hardened steel forgings. The R-1130 front railgear utilizes the vehicle's front suspension and the frame to lift the front wheels off the track approximately two inches. The dual scissor rear railgear attaches to the vehicle's frame behind the spring hangers. The scissor design makes for a more speedy operation of getting the vehicle on track and off track. The rear gear also incorporates "Cushion-Ride" springs for constant railhead pressure. With the R-1130, there are no limits imposed. If the vehicle can support the load, so can the railgear.



Standard Features:

- Rear Constant Railhead Pressure
- Adjustable Axle from Standard to Wide
- Rear Air Lock-Up; Front Manual Pin Lock-Up
- Non-Insulated Forged Steel Wheels
- Double Acting Hydraulic Cylinders
- PTO Application
- Heavy Duty Tapered Roller Bearings
- Built-in Derail Skids
- Front and Rear Rail Sweeps
- Corrosion Resistant, Long-Life Fasteners

Optional Features:

- Air Brake Package—Front and Rear
- Insulated Forged Steel Wheels
- Front Locking System—Air or Spring Pin

RAFNA R-1130 Cushion-Ride Railgear



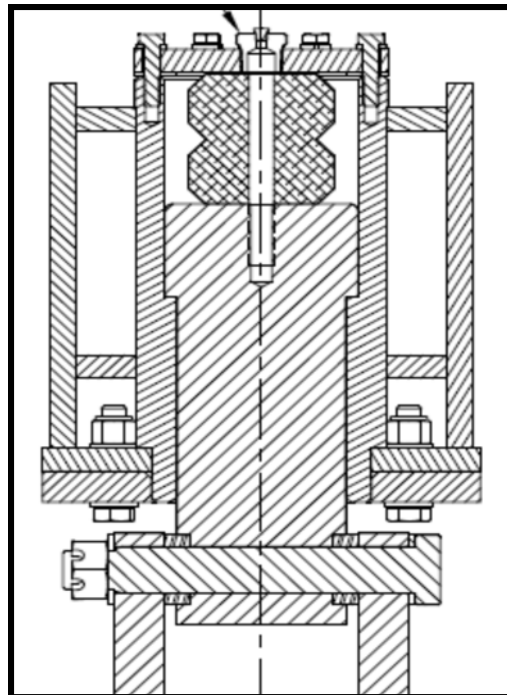
Front R-1130: Road Position



Rear R-1130: Road Position

Vehicle Classification:

- GVWR—33,000 lbs and Above
- GAWR (Front) - 20,000 lbs
- GAWR (Rear) - 46,000 lbs
- Capacity: 40,000 lbs per Railgear Axle at 20MPH



Rear R-1130 Section: Constant Railhead Pressure



G&B Specialties

P.O. Box 305

535 West Third Street

Berwick, PA 18603

570-752-5901

www.rafna.com

www.wabtec.com



G&B Specialties
A Wabtec subsidiary

Rev C08-18-2017