

# RAFNA R-150 Cushion-Ride Railgear

## Description:

G & B Specialties Model R-150 is applicable to vehicles up to 7,000 lbs GVWR. Both rotating and vertical front railgear are available. Railgear locks automatically in both road and rail position. Proven "Cushion-Ride" suspension provides superior ride quality, reduced vibration through the vehicle frame, less component stress, and constant rail wheel to rail contact. No railgear adjustments are required for varying loads. Rail wheel assemblies are bolted to the axles for simple wheel alignment. All four rail wheels provide full track circuit isolation. Included 12VDC electric / hydraulic pump and reservoir with sealed push button controls provides safe and easy access to the rail. Optional in-cab railgear controls are available. Few moving parts result in low maintenance and lubrication costs. Fully installed weight is approximately 300 lbs front and 300 lbs rear. Uses light weight 8" diameter cast steel wheels with heavy duty tapered roller bearings. Rotating rear railgear is standard.



## Standard Features:

- Cushion-Ride Rubber Suspension
- Automatic Locking System
- Heavy Duty Double Acting Hydraulic Cylinders
- Hydraulic Operating Valves on Front and Rear Units.
- 12VDC Hydraulic Pump and Reservoir
- Built-In Derail Skids
- Rail Sweeps Front and Rear
- Standard Railgear Controls
- Full Track Circuit Insulation (All Four Wheels)
- Protective Bellows Over All Inner Guide Tubes
- Mechanical Steering Wheel Lock
- Corrosion Resistant; Long Life Fasteners
- Grease Fittings at All Wear Points
- Rotating Rear Railgear is Standard

## Optional Features:

- In-Cab and Full In-Cab Railgear Controls
- Rotating Front and Vertical Front Railgear Available



# RAFNA R-150 Cushion-Ride Railgear

## Vehicle Classification:

- GVWR—6,500 lbs MAX
- GAWR (Front) - 3,100 lbs
- GAWR (Rear) - 3,400 lbs

## Wheels:

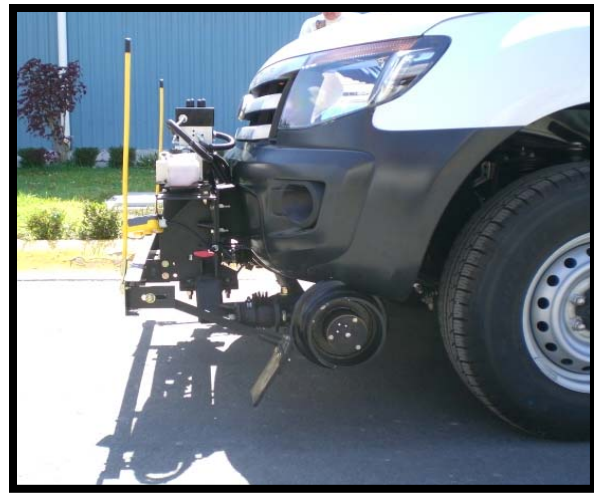
- Material—Cast Steel
- Tread—8" Diameter
- Flange—10-1/4" Diameter
- Bearings— HD Tapered Roller
- Grease Cap w/ Vent

## Vehicle Applications

- 14-15 Ford Ranger (Mexico)
- 00-05 Dodge Dakota
- 00-11 Dodge Durango

## Installed Weights:

- Total—600 lbs
- Front—300 lbs
- Rear—300 lbs



G&B Specialties  
P.O. Box 305  
535 West Third Street  
Berwick, PA 18603  
570-752-5901  
[www.rafna.com](http://www.rafna.com)  
[www.wabtec.com](http://www.wabtec.com)

 **G&B Specialties**  
A Wabtec subsidiary