

INNOVATIONS IN MOTORCOACH ACCESSIBILITY



MAXIMUM BAGGAGE SPACE.
AUTOMATIC CONVENIENCE.



INTRODUCING THE NEW RICON® MIRAGE® F10X™ WHEELCHAIR LIFT

The new Ricon Mirage F10X is the only low-profile motorcoach wheelchair lift providing maximum space efficiency, automatic convenience and the security of the Ricon Safety Zone. The exclusive, floor-mounted F10X cassette design yields a large, horizontal luggage bay area that enables drivers to quickly load more suitcases and larger parcels from both the curb and the street side of the coach. With the press of a button the Mirage F10X automatically deploys, lowers, raises and stows – the latest innovative example of why Ricon Corporation is the world leader in motorcoach accessibility.

- Floor-mounted design uses less than one cubic meter
- Mid-coach mounting optimizes load and off-load time
- Horizontal cassette provides even weight distribution
- Patented interlocked occupant restraint belt system
- Easy to use automatic push-button operation
- Industry leading 2-year parts and labor warranty



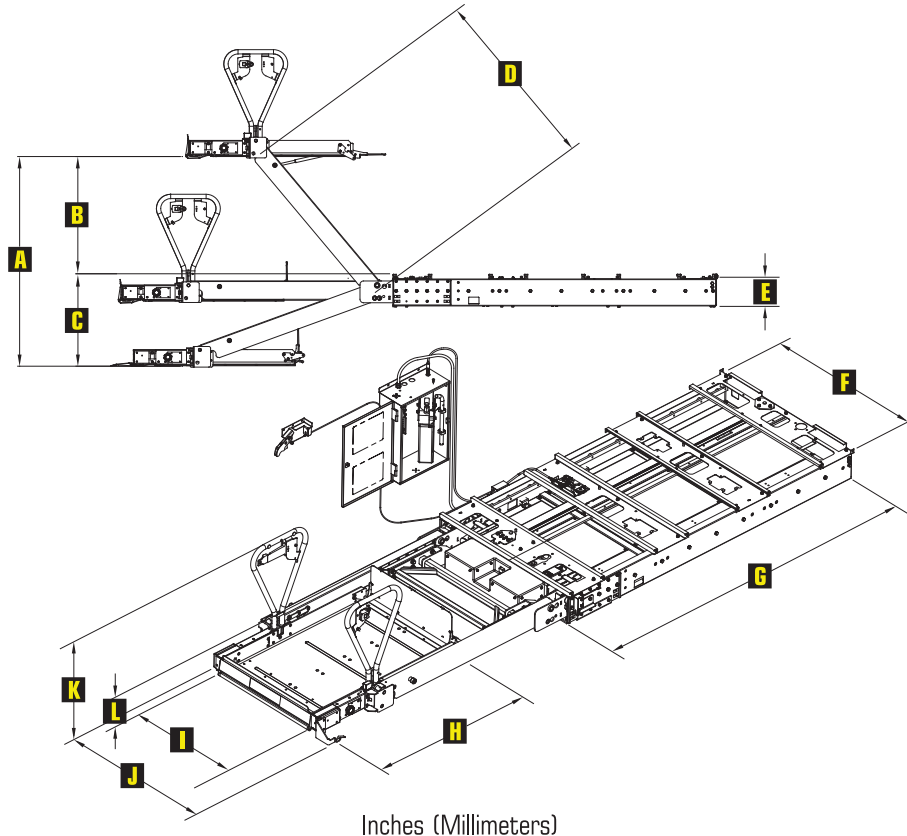
RICON® MIRAGE® F10X™ WHEELCHAIR LIFT

SPECIFICATIONS:

Power.....Under 1,500 Watts at 24 Volts DC
 Pump RatingMaximum 1800 psi / 12.4 MP
 CylinderDual, Single Acting 3.0 in / 76mm Diameter Hydraulic Cylinders
 with Integrally-Mounted Flow Control Devices
 Rated Load Capacity.....660 lbs / 300 kg

Applicable Industry Regulations:

- FMVSS 403; 2004/108/EC; 2006/42/EC; BS EN 1756-2:2004 +A1



Inches (Millimeters)

	A*	B*	C*	D	E	F
MODEL	Max Floor to Ground Travel	Max Travel Above Enclosure	Max Travel Below Enclosure	Arm Length	Enclosure Height	Enclosure Width
F10X	61.10 (1560)	34.60 (879)	26.70 (678)	52.70 (1339)	9.40 (239)	49.30 (1252)

Inches (Millimeters)

	G**	H	I	J	K	L
MODEL	Enclosure Length	Usable Platform Length	Usable Platform Width	Traveling Frame Width	Handrail Height	Bridgeplate Height
F10X	91.00 (2311)	48.00 (1219)	30.00 (762)	46.00 (1168)	30.00 (762)	12.20 (310)

Volume of Stowed Lift: 24.40ft³/ 0.69M³

Ricon Corp. reserves the right to discontinue models or options at any time or change specifications, materials, equipment, or pricing without notice and without incurring obligation.

* NOTE: Additional travel is possible up to the following maximums pending applications engineering:
 A=72.0 (1829); B=35.5 (902); C=40.5 (1029)

** NOTE: The overall length of the unit is slightly longer than the enclosure length by the amount the Sto-Loc™ hook extends beyond the front end of the enclosure .75in (19.05mm) when the lift is stowed.



THE RICON SAFETY ZONE

Surrounding passengers with industry-leading safety features for optimal security during lift operation, the Ricon Safety Zone includes the patented fully interlocked occupant restraint belt system, handrails, front and rear roll-stops and full-length side rail barriers.

The Ricon Threshold Warning System employs a contact-less acoustic sensor that provides both audible and visual alarms should the lift threshold be breached during operation.



Patented Ricon Sto-Loc™ technology secures lift when stowed.

Call Toll-Free: 1-800-322-2884



RICON CORPORATION
 7900 Nelson Road
 Panorama City, CA 91402