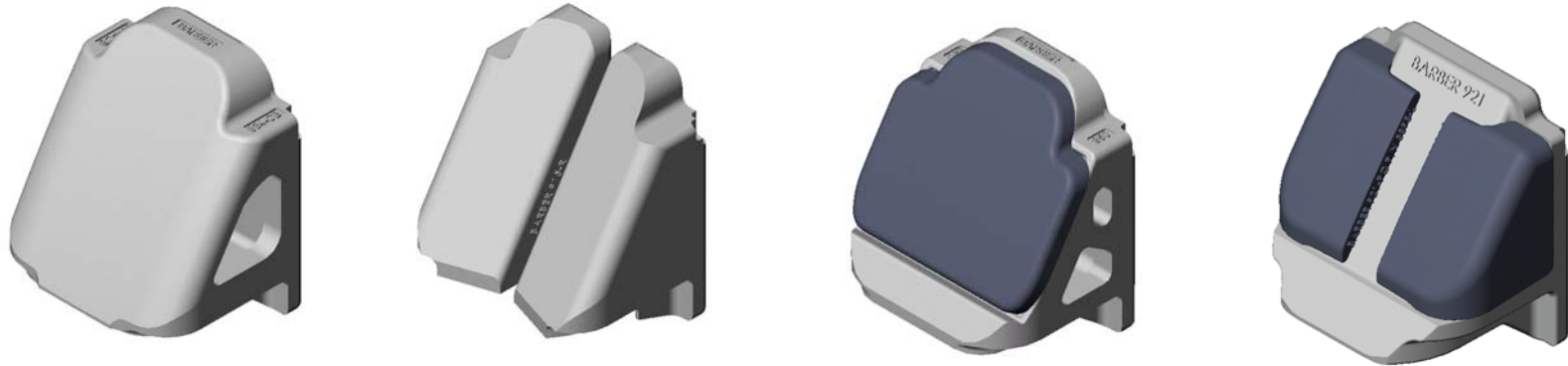


Friction Wedge Interchangeability Matrix



| Truck Type | Iron Wedge | Split Wedge* | LifeGuard Wedge | TwinGuard Wedge** |
|---------------------|------------|--------------|----------------------|-------------------|
| S-2-A | 604-C | - | - | - |
| | 606-C | - | - | - |
| | 609-D | 955-SW | 913-LG-N 913-LG-R | - |
| | 762-C | - | - | - |
| S-2-B S-2-C | 675-C | - | - | - |
| | 678-C | - | - | - |
| | 787-C | 925-SW | 888-LG-N 888-LG-R | 911-PC |
| | 762-C | - | - | - |
| S-2-D | 876 | 905-SW | 877-LG | 921-PC |
| S-2-HD S-2-HD-9C | 834-CB | 915-SW | 950-LG | 916-PC |
| S-2-E | 917-C | 945-SW | - | - |

* Bolster pocket must have square sidewalls and an insert must be installed in the pocket to use split wedge.

** Bolster pocket must have square sidewalls to use TwinGuard wedge.

Always Use Original
Barber Parts



Wabtec, Standard Car Truck

6400 Shafer Court – Ste 450, Rosemont, Illinois 60018, U.S.A.
Telephone: 847-692-6050 Fax: 847-692-6299

Not A
Controlled
Document