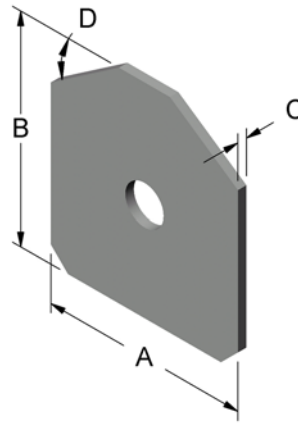
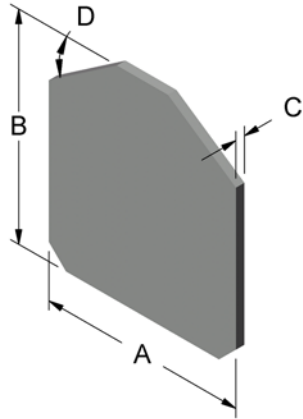


Bolster Pocket Wear Plates and Inserts



Type 1 Bolster Pocket Wear Plates				
Part No.	A	B	C	D
281+	4 3/4	4	1/4	52°
272+	4 3/4	4 1/4	1/4	34 1/2°
282	5	5	1/4	52°
273+	5 1/4	4 1/4	1/4	34 1/2°
373	5 1/4	4 1/4	1/2	34 1/2°
275	5 1/2	5 5/8	1/4	34 1/2°
276	5 1/2	6	1/4	34 1/2°
277	5 1/2	6	5/16	34 1/2°
274+	6 1/4	4 1/4	1/4	34 1/2°

+ "As cast" pocket restoration wear plate.

Material: ASTM A 514 type B alloy steel heat treated to 321 min. BHN or abrasion resistant steel BHN 341 – 415.

All bolster pocket wear plates flat within .025".

Type 3 Bolster Pocket Wear Plates				
Part No.	A	B	C	D
272-SX3+	4 3/4	4 1/4	1/4	34 1/2°
282-SX3	5	5	1/4	52°
278-SX3	5	5 1/16	1/4	34 1/2°
173-SX3+	5 1/4	4 1/4	1/8	34 1/2°
273-SX3+	5 1/4	4 1/4	1/4	34 1/2°
473-SX3	5 1/4	4 1/4	3/8	34 1/2°
175-SX3+	5 1/2	5 5/8	1/8	34 1/2°
275-SX3	5 1/2	5 5/8	1/4	34 1/2°
276-SX3	5 1/2	6	1/4	34 1/2°
376-SX3	5 1/2	6	5/16	34 1/2°
476-SX3	5 1/2	6	3/8	34 1/2°
274-SX3+	6 1/4	4 1/4	1/4	34 1/2°
279-SX3	7 1/2	5 5/8	1/4	35 1/2°
283-SX3	5 1/2	5	1/4	34 1/2°

+ "As cast" pocket restoration wear plate.

Material: ASTM A 666 type 304 austenitic stainless steel or approved equivalent.

All bolster pocket wear plates flat within .025".

Bolster Pocket Inserts		
Truck Type	Split Wedge*	Insert**
S-2-A	955-SW	5824 5286***
S-2-B		5824
S-2-C	925-SW	5286***
S-2-D	905-SW	5902
S-2-HD		5821
S-2-HD-9C	915-SW	
S-2-E	945-SW	6022

* Bolster pockets must have square sidewalls to use split wedge.

** Inserts are used exclusively with split wedges.

*** Thin insert is used in "as cast" bolster pockets (pockets designed not to use pocket wear plates). Thick insert replaces pocket wear plate.