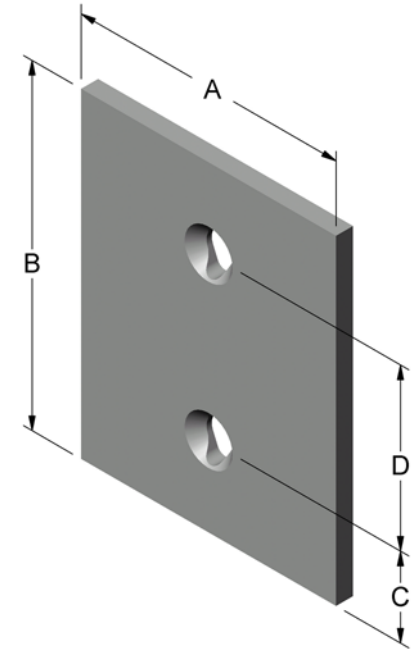


# Type-2 Column Wear Plates (Bolt Only or Bolt and Weld)

Wear Plate Part Number By Thickness				Dimensions			
3/8	7/16	1/2	9/16	A	B	C	D
5706-201				4 1/2	8 1/2	1 5/8	5 1/4
5706-202				5	8 1/2	1 5/8	5 1/4
5706-203		5708-202		5	8 3/4	1 3/4	5 1/4
5706-218				5	8 3/4	1 61/64	3 43/64
5706-204	5707-201	5708-203	5709-201	5 1/2	8 1/2	1 5/8	5 1/4
5706-205		5708-204		5 1/2	8 3/4	1 3/4	5 1/4
5706-213				6	7 3/4	1 1/4	5 1/4
5706-210		5708-209		6	8 11/16	1 23/32	5 1/4
5706-211				6	8 15/16	1 27/32	5 1/4
5706-208		5708-207		6 1/2	9 1/4	2	5 1/4
5706-212		5708-210		7 1/2	7 1/2	1 1/8	5 1/4
5706-215				7 1/2	7 3/4	1 1/4	5 1/4
5706-216				7 1/2	8 1/16	1 13/32	5 1/4
5706-209		5708-208		7 1/2	8 5/16	1 17/32	5 1/4
5706-217				7 1/2	8 9/16	1 21/32	5 1/4
5706-207		5708-206		7 1/2	8 15/16	1 27/32	5 1/4
5706-206		5708-205		7 1/2	9 7/16	2 3/32	5 1/4
5706-214		5708-201		7 1/2	9 7/16	2 11/32	4 3/4
		5708-212		7 1/2	9 15/16	2 11/32	5 1/4
		5708-213		10	10	2 5/8	4 3/4



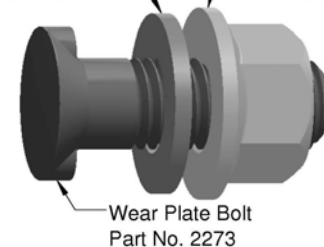
Material: Hot wrought carbon steel bar, quenched and tempered to 365-415 BHN.

Finish: 85% scale free.

All wear plates flat within .025" TIR.

3/4 Flat Washer, Hardened  
Required For Some Designs  
Part No. 2275

3/4-10 Hex Flange Nut  
Part No. 6325



Wear Plate Bolt  
Part No. 2273

**Typical Column Wear Plate  
Mounting Hardware**

For application, see section 4

Always Use Original  
Barber Parts



**Wabtec, Standard Car Truck**

6400 Shafer Court – Ste 450, Rosemont, Illinois 60018, U.S.A.  
Telephone: 847-692-6050 Fax: 847-692-6299

Not A  
Controlled  
Document